

On-site integration management for the hosted JAZZ Fusion solution



Front I/O Port



Rear I/O Port

BroadSoft's **JAZZ Fusion Edge ESB** Integration Manager is a specially designed software platform engineered to compliment BroadSoft's hosted JAZZ Fusion Call Accounting, Guest Personalization, PABX telemanagement and Middleware solution. Installed locally, JAZZ Edge ensures that the hotel PABX, PMS and voice mail systems maintain real time communication anytime regardless of external network interruptions.

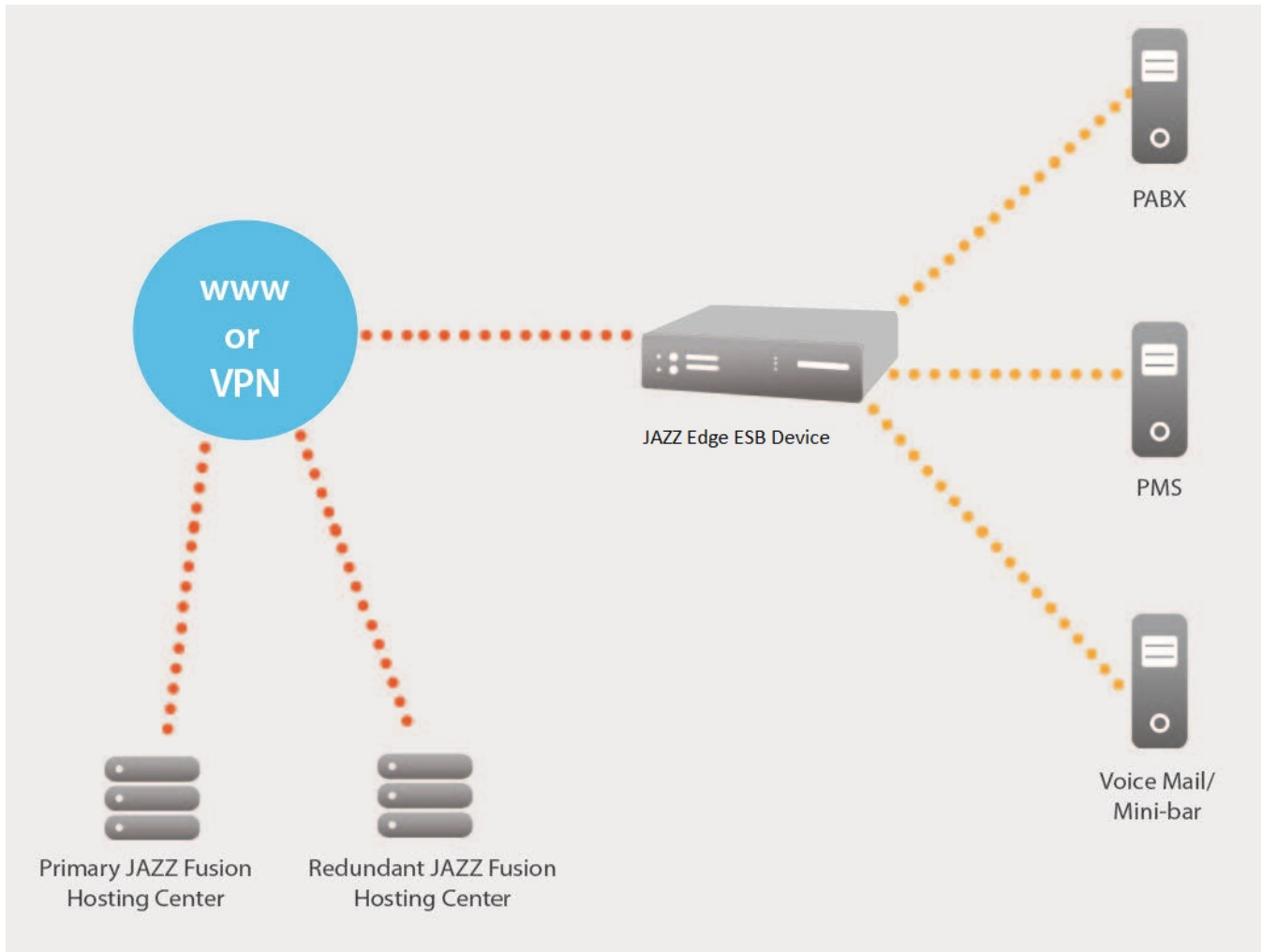
High Reliability Solid State Design

JAZZ Edge is an exceptionally rugged, high reliability, solid state device designed specifically to ensure maximum up time. JAZZ Edge utilizes advanced solid state drive technology to eliminate the risks associated with the moving parts common to traditional hard drive architectures.

Maintaining Critical Service Provisioning

By managing real time communications on site, JAZZ Edge ensures that the automated provisioning of critical guest facing functions are not impacted by external network performance. These functions include:

- Guest Wake Up Calls
- Automatic restriction and un-restriction of guest telephones upon check/in check/out
- Guest name display on administrative stations
- Room/housekeeping status updates
- Do not Disturb/Class of Service assignments
- Automated assignment of guest language preferences for voice mail

BroadSoft Hosted JAZZ Fusion with JAZZ Edge ESB Device**Functional Description**

- JAZZ Edge is installed locally at the hotel.
- JAZZ Edge manages/facilitates real time communication between the hotel PMS, PABX, Voice Mail and the BroadSoft hosted JAZZ Fusion solution.
- All guest and administrative telephone call records are transmitted by the JAZZ Edge to hosted JAZZ Fusion where calls are dynamically priced based upon the personalized rate and service packages defined by the hotel. Guest calls are then transmitted back to the JAZZ Edge for transmission to the hotel PMS.
- In the event of external network interruptions, all on site communications and service provisioning continues in real time while telephone call records are buffered until the network issue is cleared.

Technical Overview

CPU	Intel Cedar Trail M-processor (1.6GHz)
Memory	2 GB
Operating System	Windows 7 - PRO
Storage	120 gig Solid State Drive (SSD)
Power	Built-in 6-36 Vdc wide range DC input, 3P pluggable connector with latch (V-, GND, V+)
Ethernet Ports	3 GbE ports
Serial Ports	Four RS-232
USB Ports	Four USB 2.0 ports
Dimensions	7.9"X 5.3"X1.9"
Weight	1.8kg (3.97lbs)
Acceptable Temperature Range	0-50 degrees C
Transaction Buffer	500,000+ records